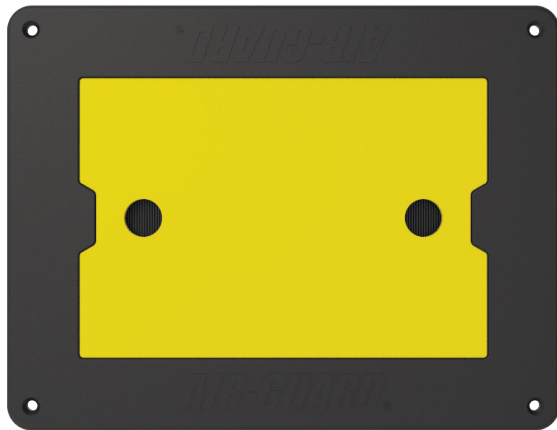
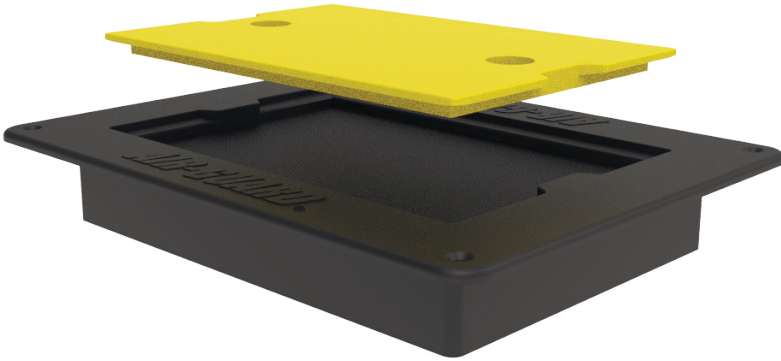


FEATURES:

- ❑ Double layered engineered sealing system - nylon no 6 brush system backed with EPDM gasket
- ❑ Integrated safety cover in high visibility yellow (removable and re-useable)
- ❑ Airguard frame and lid manufactured from high strength flame retardant ABS
- ❑ Requires a 9.0" x 6.5" (230 mm x 165 mm) cutout in raised floor panel
- ❑ Overall dimensions 10 1/8"L x 8 3/8"W x 1 5/8"D
- ❑ RoHS compliant - meets NECN code for cutouts



DATA CENTER BEST PRACTICES - SEALING AROUND CABLE OPENING:

- ❑ Reduces bypass airflow and increases under-floor static pressure
- ❑ Increases cooling efficiencies
- ❑ ROI (reduces energy costs by lowering CRAC demand)
- ❑ Hot Aisle / Cold Aisle best practice requires sealed cutouts

