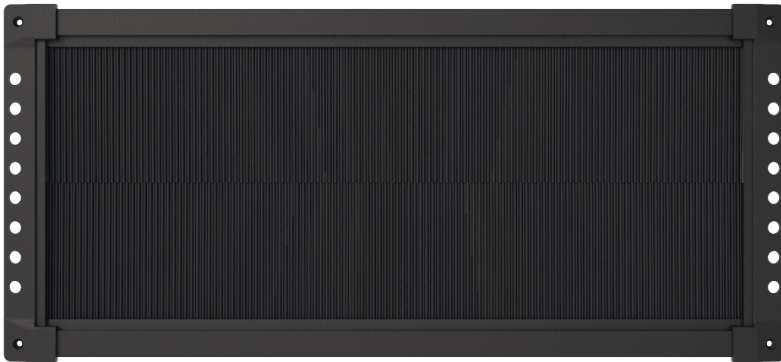
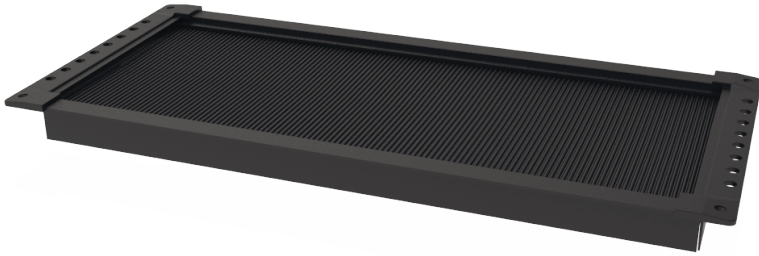


FEATURES:

- ❑ Engineered sealing system - nylon no 6 brush system
- ❑ Airguard frame manufactured from high strength flame retardant ABS
- ❑ Brush Kits are offered to retro-fit openings that are not compatible with standard products or for special size cutouts for new installations.
- ❑ Available in 12" (300 mm) and 24" (600 mm) lengths.
- ❑ Brush strips can be cut for custom sizes or added together for larger openings.
- ❑ Overall dimensions: 24" X 9" (600 mm x 225 mm)
- ❑ RoHS compliant - meets NECN code for cutouts



DATA CENTER BEST PRACTICES - SEALING AROUND CABLE OPENING:

- ❑ Reduces bypass airflow and increases under-floor static pressure
- ❑ Increases cooling efficiencies
- ❑ ROI (reduces energy costs by lowering CRAC demand)
- ❑ Hot Aisle / Cold Aisle best practice requires sealed cutouts

